



DC Fuse Holder

EDFH Series Fuse 1500V

Leading Manufacturer Protects Solar Power Safety

Rev3.0 2024/05/21



DC FUSE HOLDER

EDFH series Fuse 1500V



Product Application

This series of fuse is suitable for solar photovoltaic power generation system, rated voltage up to 1500V, rated current to 50A, connected with photovoltaic panels and batteries, to charge variable flow system for short circuit breaking protection in photovoltaic station and photovoltaic power generation system. The rated breaking capacity is 50KA, products conform to IEC 60269-6.

Product Benefits

- Ambient Temperature: -40°C - + 90°C.
- Equipment installation height: less than 2000m (if you want use exceeding this height, pls tell us in advance, we can design according to your requirements).
- Fuse Link is made of pure silver, welding low tin and encapsulated in the high-strength porcelain, the fuse tube filled with high pure quartz sand with chemically processed as an arc medium, fuse body is connected with contacting terminals by spot welding.

Select Code

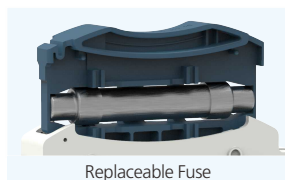
E	D	FH	□	-	□ / □	□
1	2	3	4		5	6
					7	

Code	Name	Description
1	ONCCY brand	E
2	DC	D
3	Product Code	FH: Fuse Holder
4	Rated voltage	T: 1500V
5	Rated current	50: 50A
6	Pole	1: 1P
7	Light	L: with light Nil: with out light

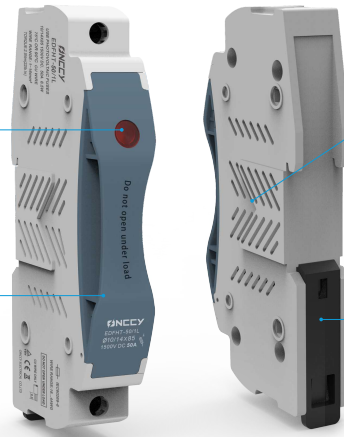
Appearance Introduction



Short-circuit indicator
Optional: with light or without light



Replaceable Fuse
Detachable opening closing



Heat sink hole
Release heat of inside



Latch
35mm Din rail bolt mounting

Electrical Characteristics

Rated Working Voltage	1500V DC
Rated Current	50A
Breaking Capacity	50KA
Wire Range	1-16mm ²

Installation Environment

Operating Temperature Range	-40°C~+90°C
Material	PC Flame Retardant PC
Torque	2.5N·m
Standard	IEC 60269-6

Select Code

E 1	D 2	F 3	□ / □ 4	□ 5
Code	Name	Description		
1	brand	E		
2	DC	D		
3	Product Code	F: Fuse		
4	Rated size	1085: 10×85mm	1485: 14×85mm	
5	Rated current	1085: 2A~32A	1485: 30A~50A	



Fuse Specifications

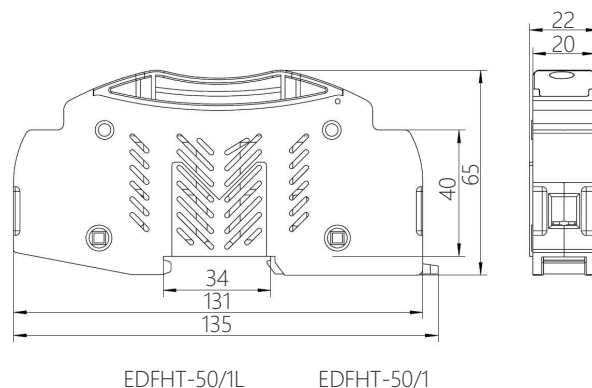
Rated Working Voltage	1500V DC	
Rated Current	2~32A	30~50A
Breaking Capacity	50KA	
Class	GPV	
Time Constant	1-3ms	

Testing Method

GPV The appointed time and current of Fuse

GPV Fuse current rated	Appointed Time	Appointed Current	
		Inf	If
$I_n \leq 63A$	1	1500	15
$63A < I_n \leq 160A$	2		
$160A < I_n \leq 400A$	3		
$I_n > 400A$	4		

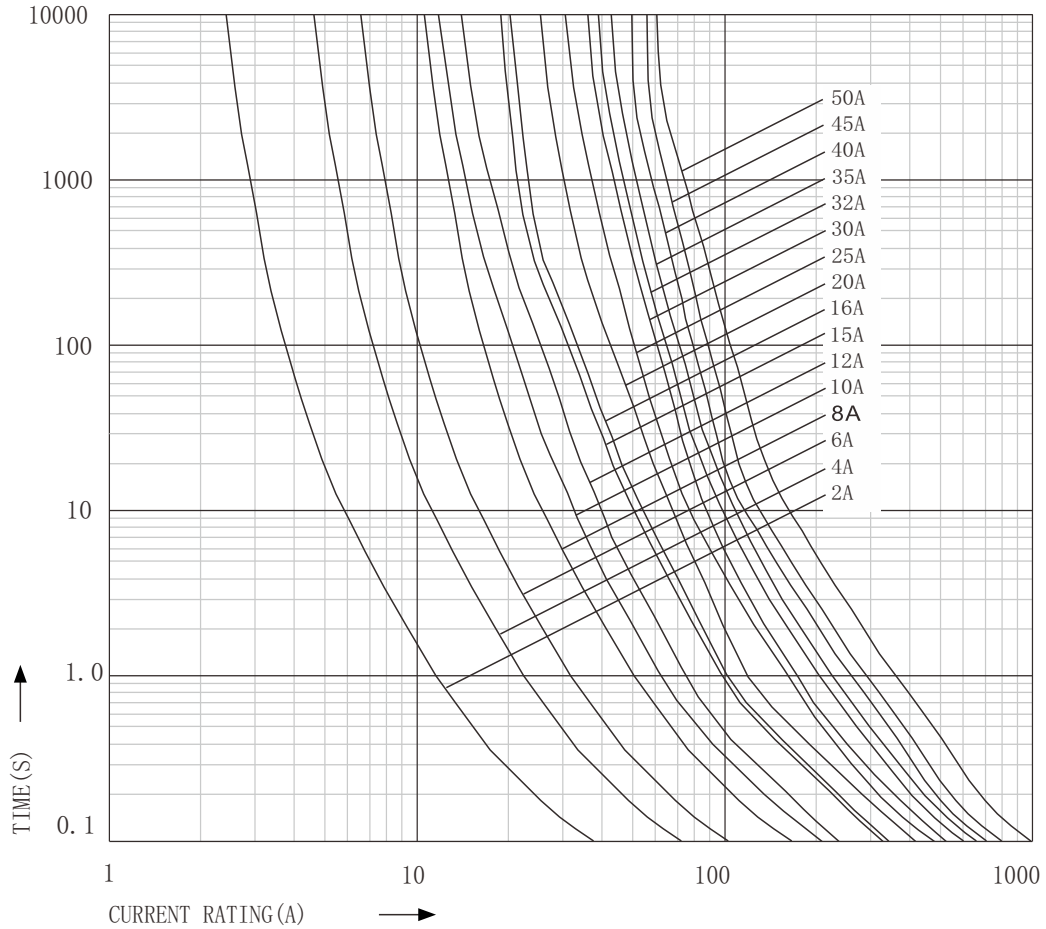
Dimensions



DC FUSE HOLDER

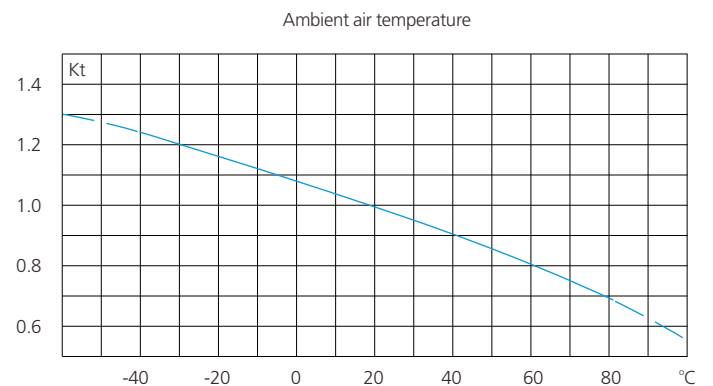
1500VDC Fuse

Prospective Current In Amps RMS



Operating conditions

- When the fuse exceeds the service conditions, some parameters may need to be corrected, and our company should be consulted.
- It is recommended that the current value of long-term through current shall not be greater than 75% of the rated current.
- Normal service conditions: $-5^{\circ}\text{C} \sim 40^{\circ}\text{C}$, allowable service conditions: $-40^{\circ}\text{C} \sim 90^{\circ}\text{C}$.
- Parameters of air temperature change: when working below -5°C , the pre arc time of low times overload current of fuse is slightly prolonged and the rated current is slightly increased. Unless the working range is above -5°C , it is generally necessary to increase the rated current of fuse
- When the fuse works above 40°C , the rated current needs additional correction, and the correction factor is - Kt



EDFH series Fuse 1500V

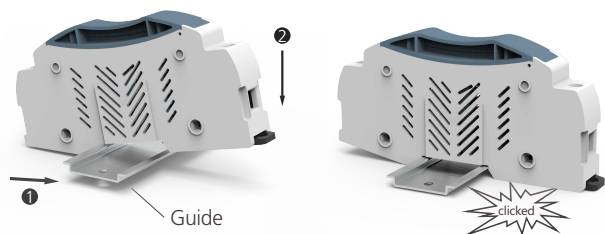
Electrical Characteristics

Designed to: UL248-19/IEC60269-6 GB/T13539-6

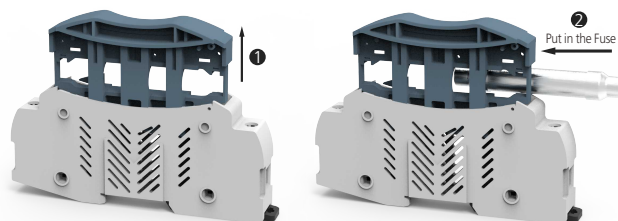
Serial number	Model	Rated Current(A)	Watts loss		Energy Integrals	
			0.8In (w)	1.0In (w)	Pre-arcing I ² t(A ² s)	Total I ² t(A ² s)
1	1500VDC/10X85/2A	2	1.7	3.20	4	8
2	1500VDC/10X85/3A	3	1.77	3.32	6	11
3	1500VDC/10X85/4A	4	1.69	3.19	8	14
4	1500VDC/10X85/5A	5	1.71	3.22	11	22
5	1500VDC/10X85/6A	6	1.73	3.25	15	30
6	1500VDC/10X85/8A	8	1.79	3.36	9	35
7	1500VDC/10X85/10A	10	1.99	3.74	10	98
8	1500VDC/10X85/12A	12	2.28	4.29	12	120
9	1500VDC/10X85/15A	15	2.63	4.95	14	170
10	1500VDC/10X85/16A	16	2.69	5.06	16	190
11	1500VDC/10X85/20A	20	3	5.65	34	400
12	1500VDC/10X85/25A	25	4.35	7.9	65	550
13	1500VDC/10X85/30A	30	4.68	8.5	85	680
14	1500VDC/10X85/32A	32	5.01	9.1	90	700

Serial number	Model	Rated Current(A)	Watts loss		Energy Integrals	
			0.8In (w)	1.0In (w)	Pre-arcing I ² t(A ² s)	Total I ² t(A ² s)
1	1500VDC/14X85/30A	30	4.57	8.6	90	720
2	1500VDC/14X85/32A	32	4.72	8.85	95	730
3	1500VDC/14X85/35A	35	5.12	9.35	95	750
4	1500VDC/14X85/40A	40	6.63	12.5	125	800
5	1500VDC/14X85/50A	50	7.25	13.65	125	920

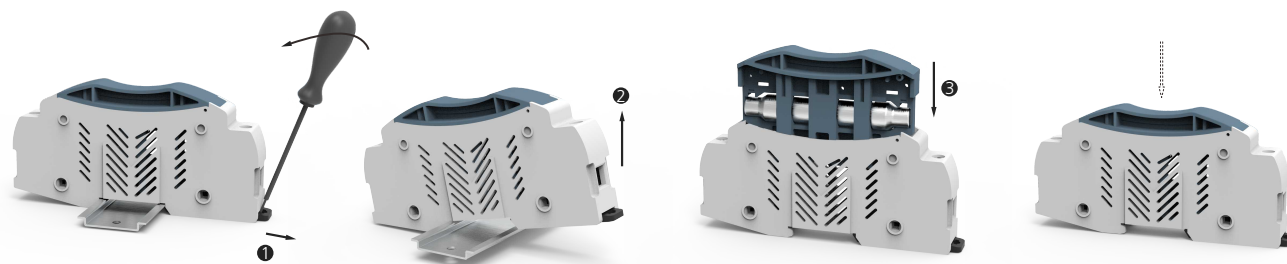
Installation



Replacement Fuse



Disassemble



DC FUSE HOLDER

EDFH series Fuse 1500V



Product Application

EDF series fuse holder is made of refractory material, and meets the standard of IEC 60269. The maximum rated voltage is 1500V and the maximum current is 80A. As a short circuit and over-current protector, it is widely used in the high and low voltage distribution system, control system, and electrical equipments, like distribution box and inverter.

Product Benefits

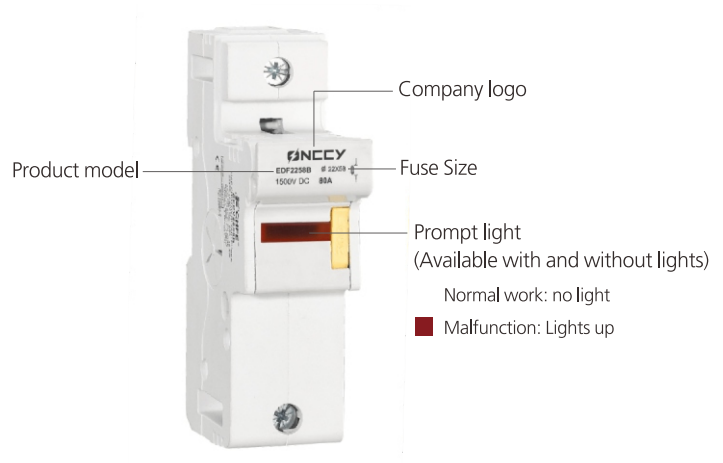
- Din35 Rail Installation, Easy to Install
- Adjustable terminal block, Wiring firm
- Fire-retardant shell, high temperature resistance
- Flexible installation, Easy to replace

Select Code

E	D	FH	□	- □ / □	□	□
1	2	3	4	5	6	7

Code	Name	Description
1	brand	E
2	DC	D
3	Product Code	FH: Fuse Holder
4	Rated voltage	T: 1500VDC
5	Fuse Rated current	80:80A
6	Pole	1: 1P
7	Light	L: with light Nil: with out light

Appearance Introduction

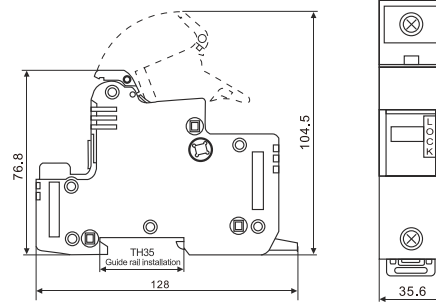


EDFH series Fuse 1500V

Technical Data

Photovoltaic Fuse	EDFHT-80
Rated Current	80A
Fuse Size	22x58mm
Rated Voltage	1000V DC 1500V DC
Class of Operation	gPV
According to	IEC 60269

Dimensions



EDF2258B

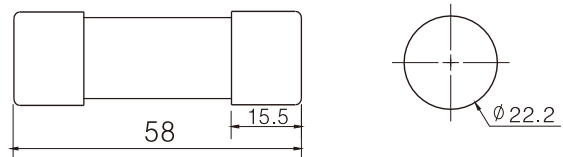


Code	Name	Description
1	brand	E
2	DC	D
3	Product Code	F: Fuse
4	Rated size	2258:22×58mm
5	Rated current	10A~80A

Technical Data

Photovoltaic Fuse	EDF2258
Rated Current	10-80A
Fuse Size	22x58mm
Rated Voltage	1000V DC 1500V DC
Class of Operation	gPV
According to	IEC 60269-6
Breaking Capacity	10kA
Time Constant	1-3ms

Dimensions



EDF2258